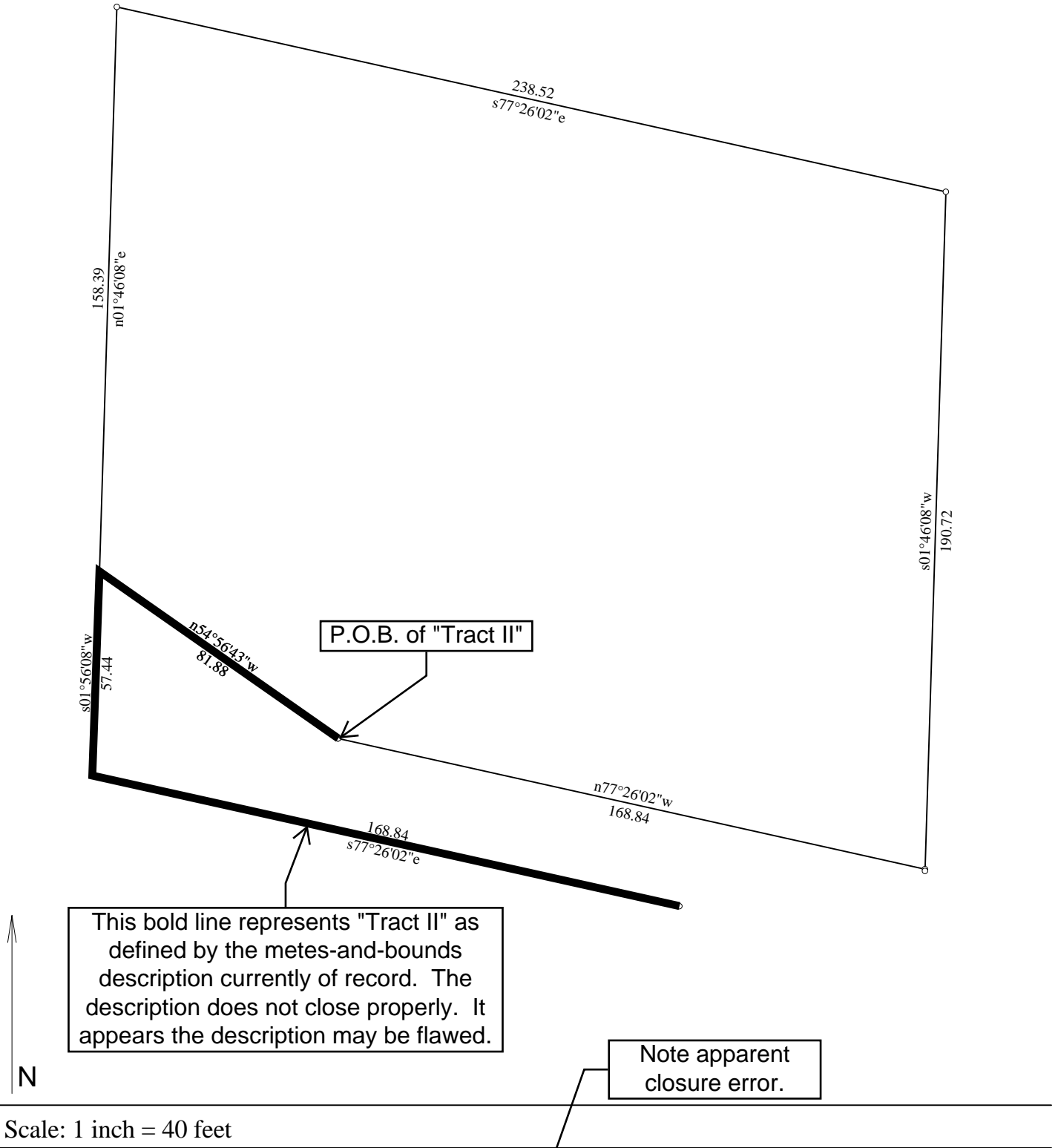


THE APPARENT ERROR IN THE METES-AND-BOUNDS DESCRIPTION OF THE SECOND TRACT IS DEPICTED BELOW



This bold line represents "Tract II" as defined by the metes-and-bounds description currently of record. The description does not close properly. It appears the description may be flawed.

Note apparent closure error.

Scale: 1 inch = 40 feet

+Tract 1: 1.000 Acres: 43540 Sq Feet: Closure = n01.5050e 0.45 Feet/Precision = 1/1878: Perimeter = 838 Feet
 +Tract 2: 0.065 Acres: 2838 Sq Feet: Closure = n63.4911w 106.78 Feet/Precision = 1/ 3: Perimeter = 308 Feet