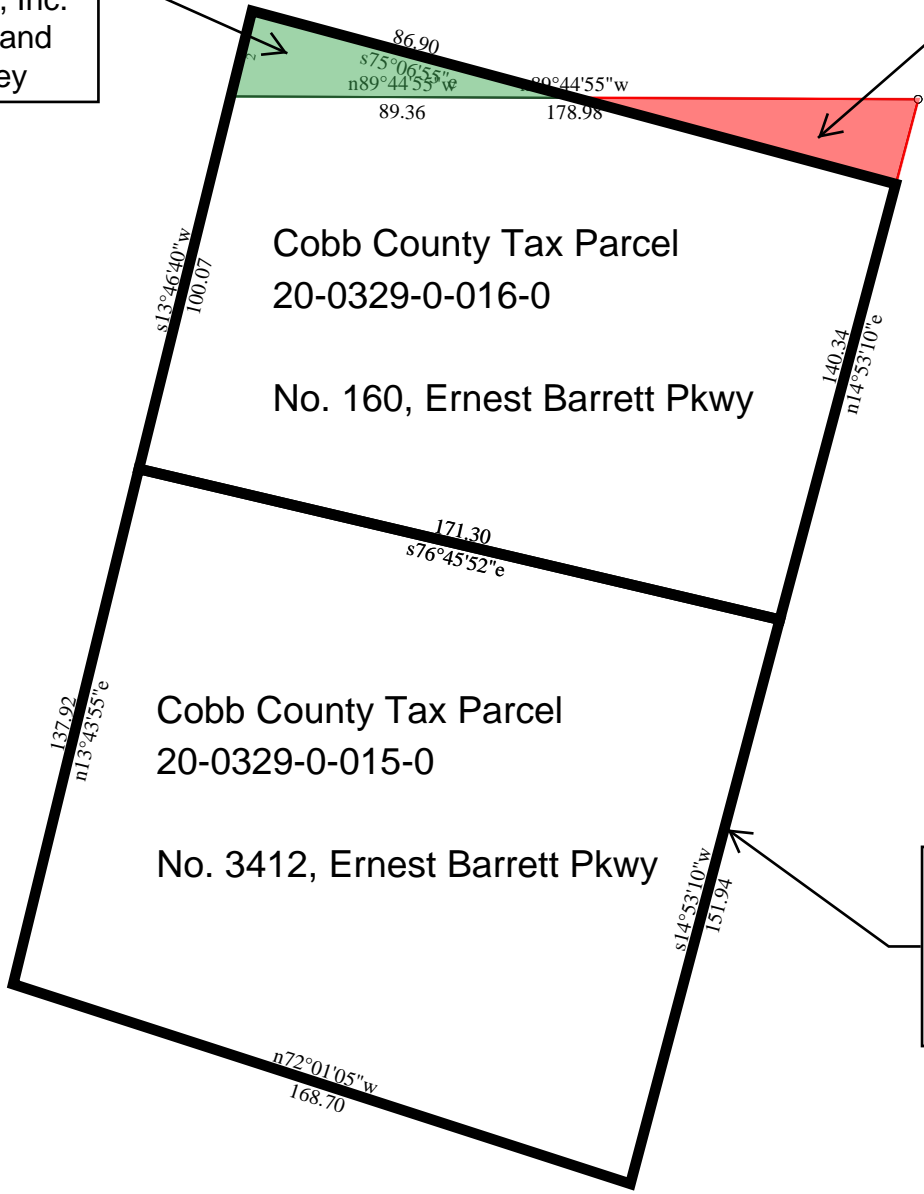


Property acquired by Brown, Corcoran and Steele, Inc. from Cecil and Hilda Kersey

Property conveyed to Cecil and Hilda Kersey



The bold outline represents the current boundaries of the two subject properties.

Title:		Date: 12-17-2009
Scale: 1 inch = 50 feet	File: 160 and 3412 Ernest Barrett Parkway NW.des	
+Tract 1: 0.476 Acres: 20722 Sq Feet: Closure = s59.1446e 0.01 Feet: Precision =1/65692: Perimeter = 591 Feet +Tract 2: 0.565 Acres: 24610 Sq Feet: Closure = n58.4200e 0.00 Feet: Precision =1/147953: Perimeter = 630 Feet -Tract 3: 0.023 Acres: 982 Sq Feet: Closure = n84.0545e 0.00 Feet: Precision =1/77838: Perimeter = 199 Feet +Tract 4: 0.023 Acres: 981 Sq Feet: Closure = n88.1510w 0.00 Feet: Precision =1/80243: Perimeter = 199 Feet Net Area= 1.041 Acres: 45331 Sq Feet		
001=n89.4455w 178.98	008=n72.0105w 168.70	015=@0 +
002=s13.4640w 100.07	009=n13.4355e 137.92	016=/n89.4455w 89.62
003=s76.4552e 171.30	010=s76.4552e 171.30	017=n89.4455w 89.36
004=n14.5310e 140.34	011=@0 -	018=n13.4640e 22.58
005=@0 +	012=n89.4455w 89.62	019=s75.0655e 86.90
006=/s14.5310w 140.34	013=s75.0655e 86.71	
007=s14.5310w 151.94	014=n14.5310e 22.64	