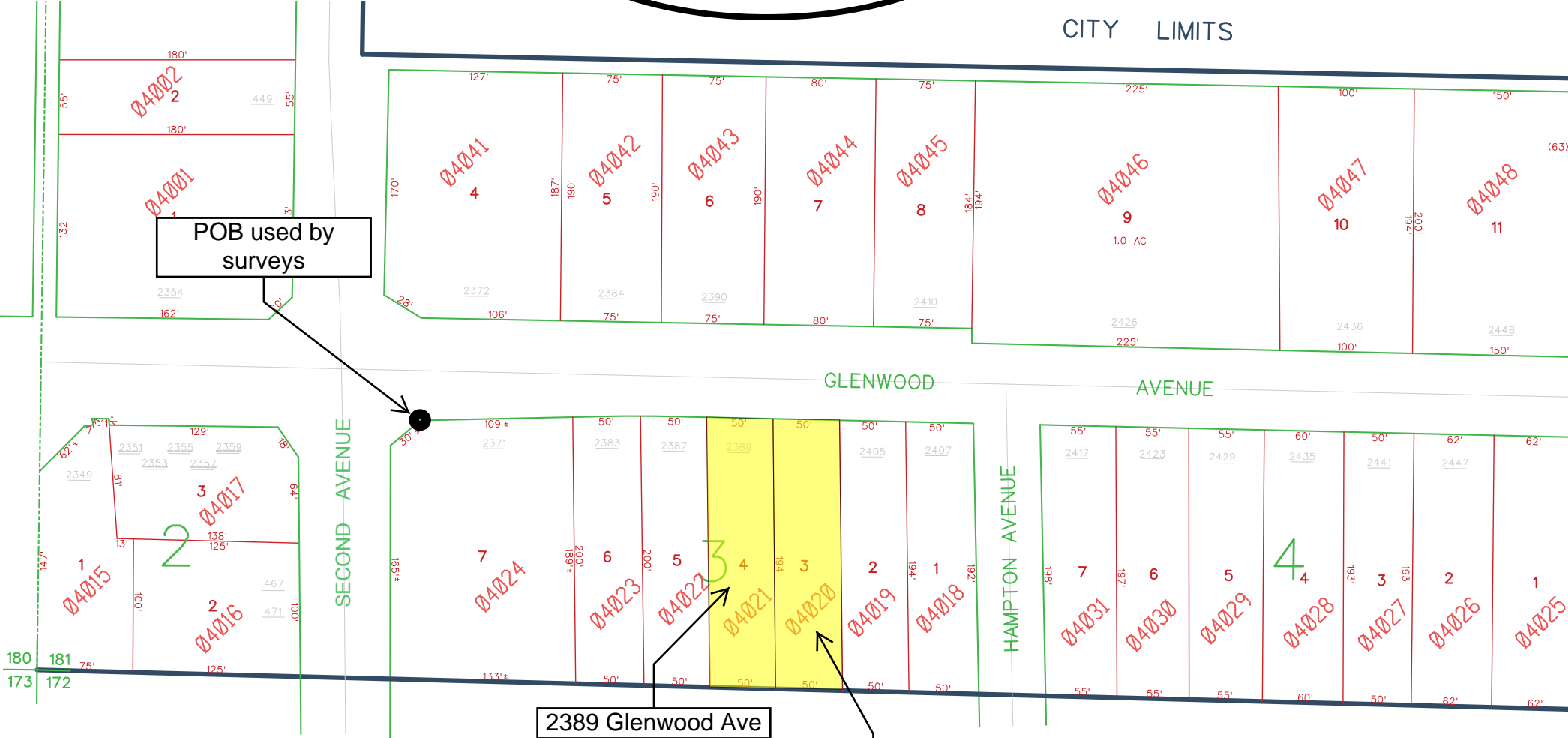


# DeKalb County Tax Map

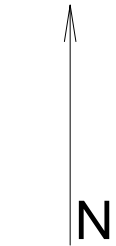
CITY LIMITS



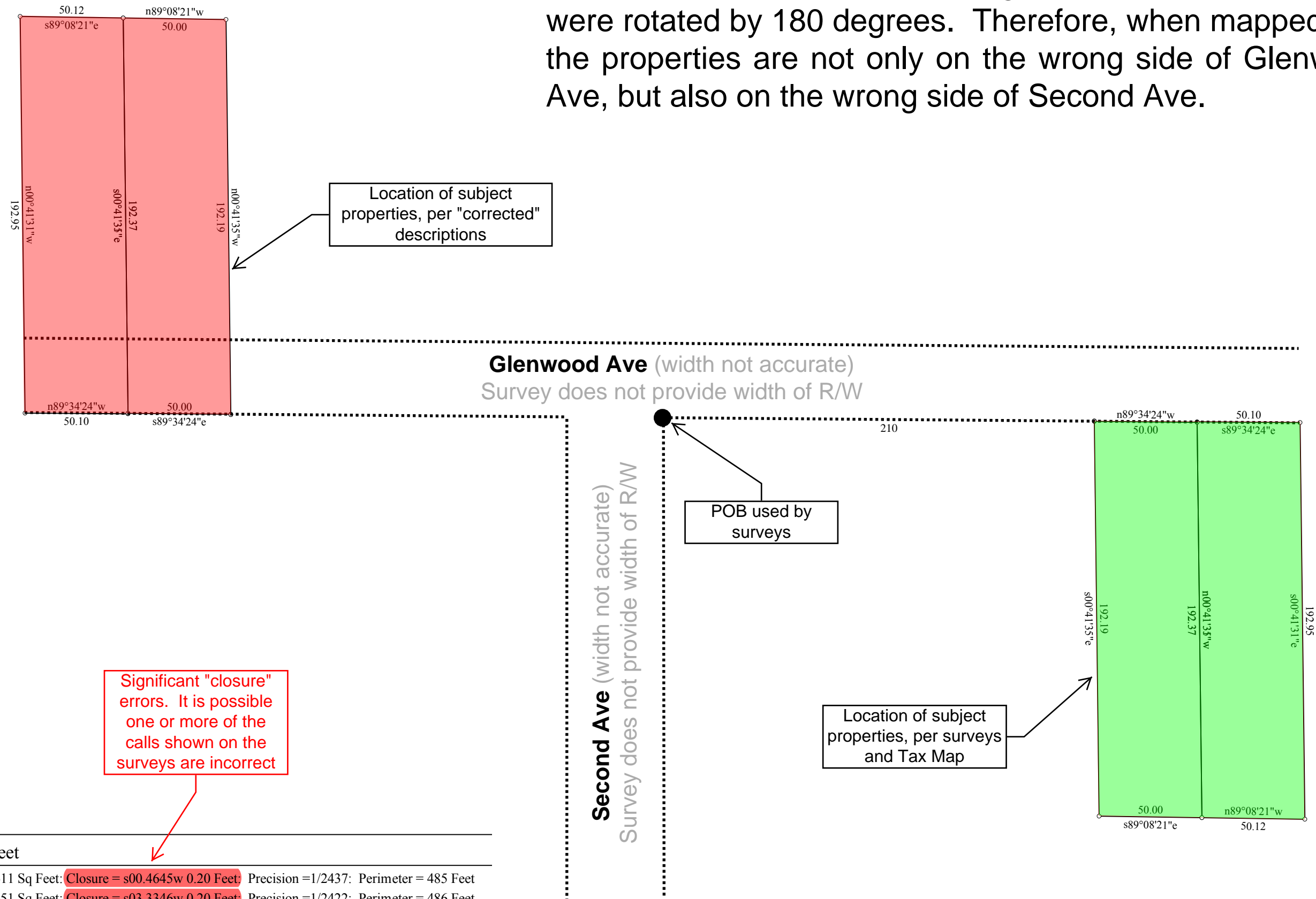
POB used by surveys

2389 Glenwood Ave

0 Glenwood Ave  
(presumably nka  
2395 Glenwood Ave)



**Analysis:** The bearings for all of the calls used in the "corrected" descriptions, including the call to reach the POB, were rotated by 180 degrees. Therefore, when mapped out, the properties are not only on the wrong side of Glenwood Ave, but also on the wrong side of Second Ave.



|   |
|---|
| Tract 1: 0.221 Acres: 9611 Sq Feet: Closure = s00.4645w 0.20 Feet: Precision = 1/2437: Perimeter = 485 Feet |
| Tract 2: 0.222 Acres: 9651 Sq Feet: Closure = s03.3346w 0.20 Feet: Precision = 1/2422: Perimeter = 486 Feet |
| Tract 3: 0.221 Acres: 9611 Sq Feet: Closure = n00.4645e 0.20 Feet: Precision = 1/2437: Perimeter = 485 Feet |
| Tract 4: 0.222 Acres: 9651 Sq Feet: Closure = n03.3346e 0.20 Feet: Precision = 1/2422: Perimeter = 486 Feet |