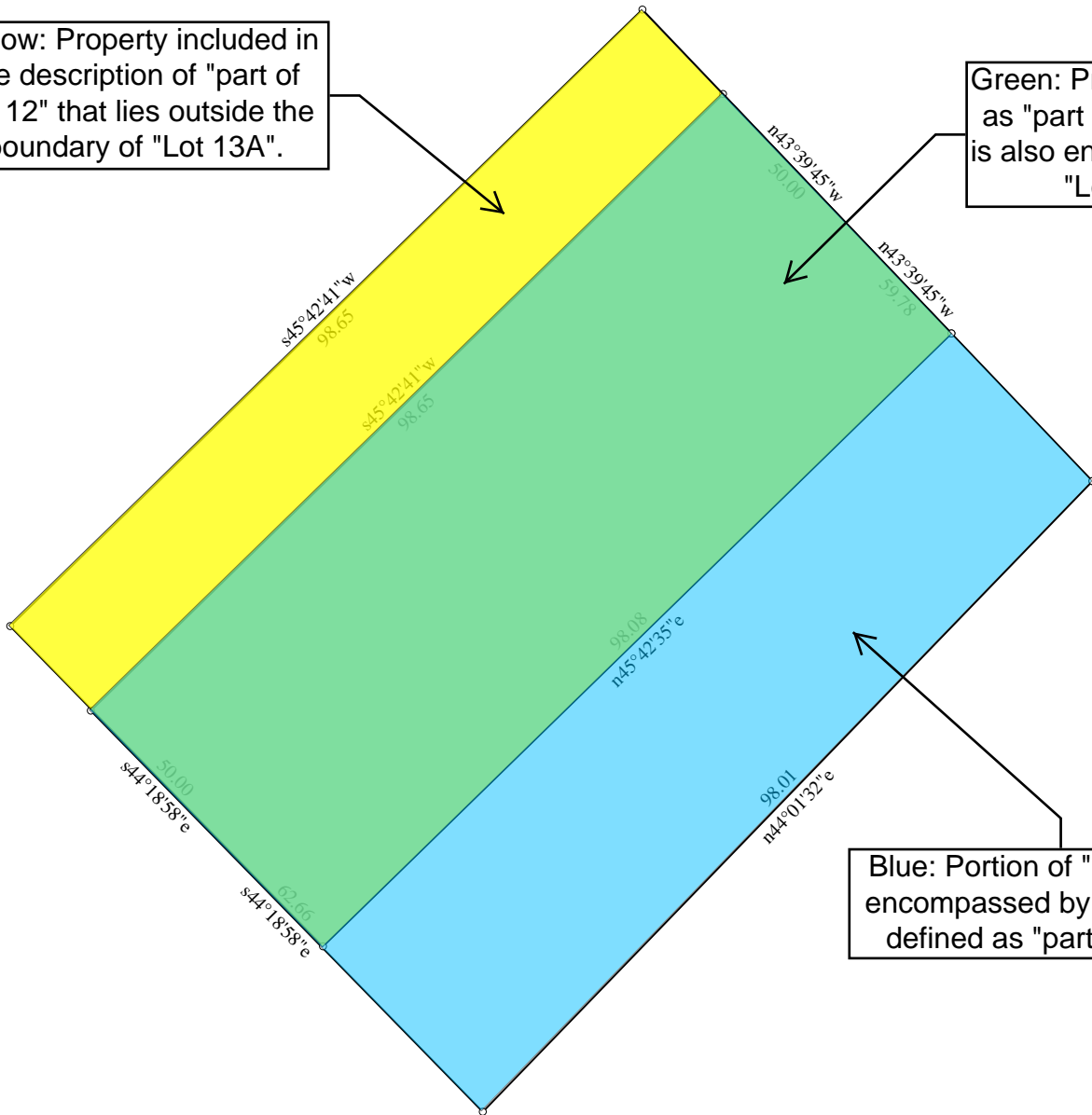


Yellow: Property included in the description of "part of Lot 12" that lies outside the boundary of "Lot 13A".

Green: Property defined as "part of Lot 12" that is also encompassed by "Lot 13A".



Blue: Portion of "Lot 13A" not encompassed by the property defined as "part of Lot 12".



Scale: 1 inch = 20 feet

Tract 1: 0.138 Acres: 6018 Sq Feet: Closure = s58.0312w 0.00 Feet: Precision >1/999999: Perimeter = 319 Feet

Tract 2: 0.113 Acres: 4918 Sq Feet: Closure = s64.2850w 0.00 Feet: Precision >1/999999: Perimeter = 297 Feet

001=/n43.3945w 213.69

002=/n43.3945w 59.78

003=/s45.4241w 98.65

004=/s44.1858e 62.66

005=/n44.0132e 98.01

006=@0

007=/n43.3945w 236.50

008=/n43.3945w 50.00

009=/s45.4241w 98.65

010=/s44.1858e 50.00

011=/n45.4235e 98.08 ?