

This call had to be generated by the mapping software, as the distance is omitted from the description incorporated by deeds currently of record.

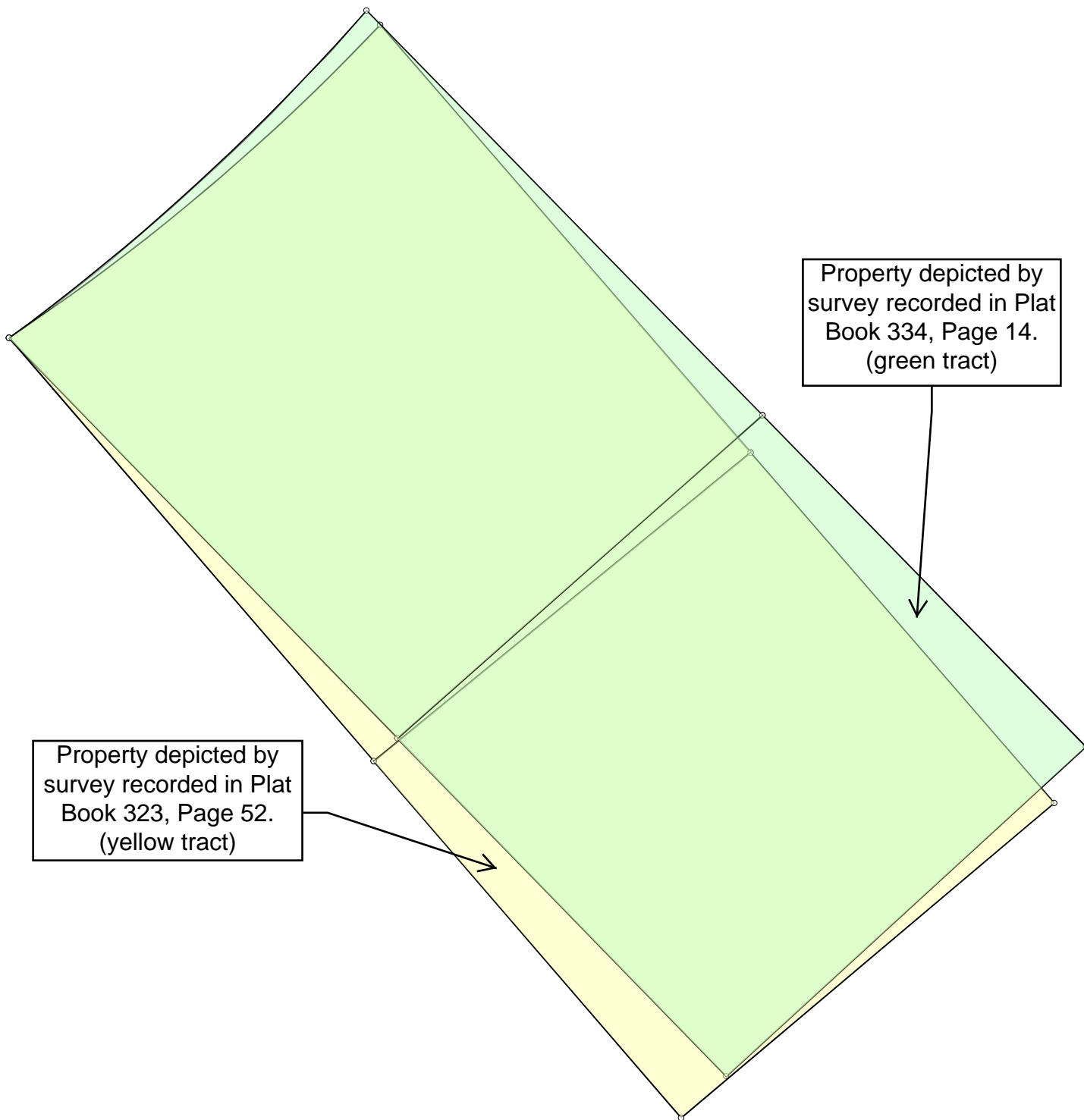
This drawing depicts the metes-and-bounds description that is incorporated by the following deeds:  
QCD @ 45755-30, WD @ 45755-32, Foreclosed SD @ 45755-34 and DUP @ 48473-557

Scale: 1 inch = 30 feet

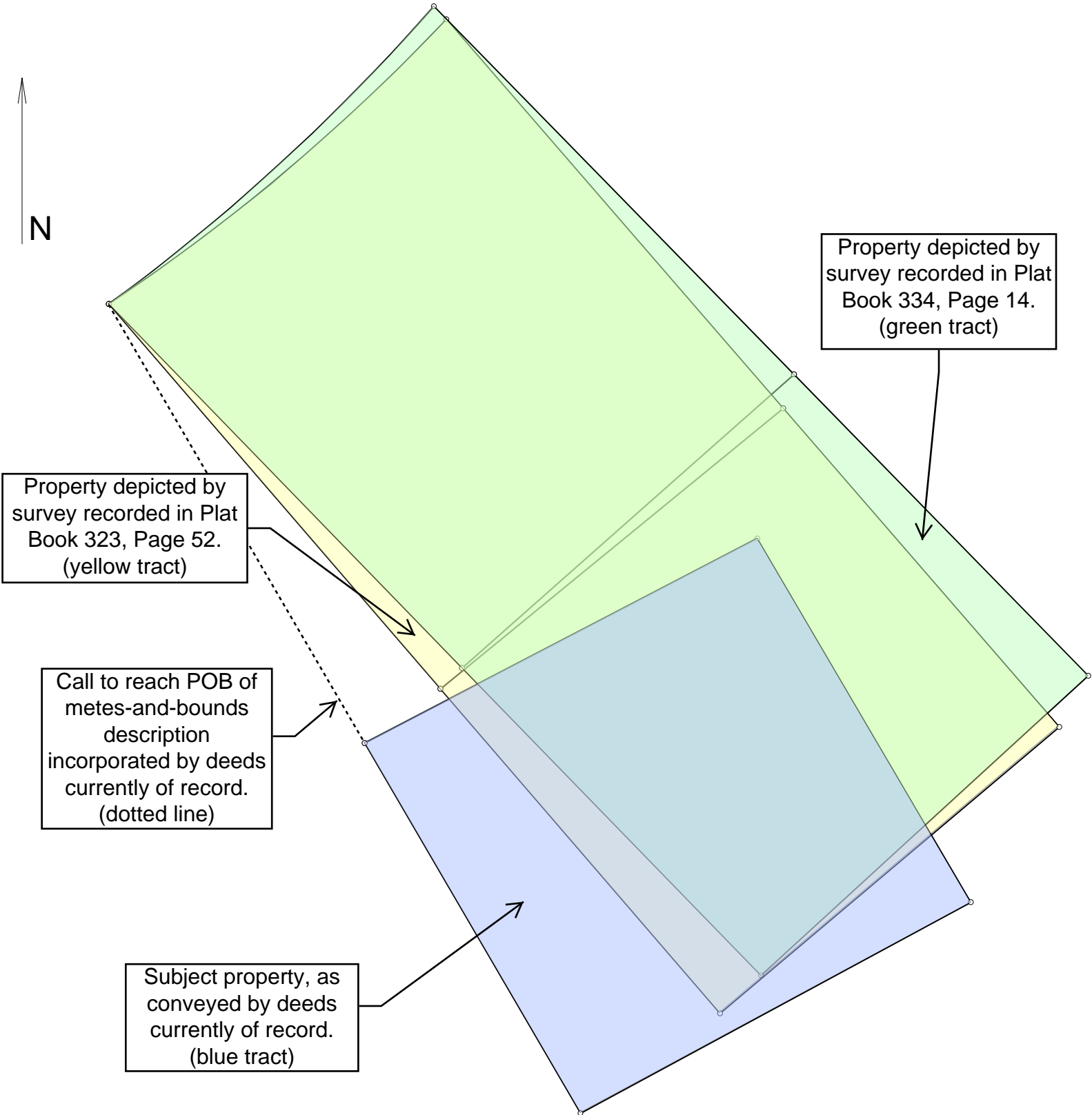
Tract 1: 0.222 Acres: 9655 Sq Feet: Closure = s26.4157e 0.00 Feet: Precision >1/999999: Perimeter = 393 Feet

001=n62.3138e 100.32  
002=s30.2602e 95.46

003=s61.3834w 100.53  
004=n30.1611w 97.00 ?



This drawing depicts the two recorded plats overlaid onto one-another, to illustrate the apparent bearing rotation.



This drawing depicts all varying descriptions of the subject property we find of record, overlaid onto one-another, to illustrate the apparent bearing rotation.

Scale: 1 inch = 30 feet