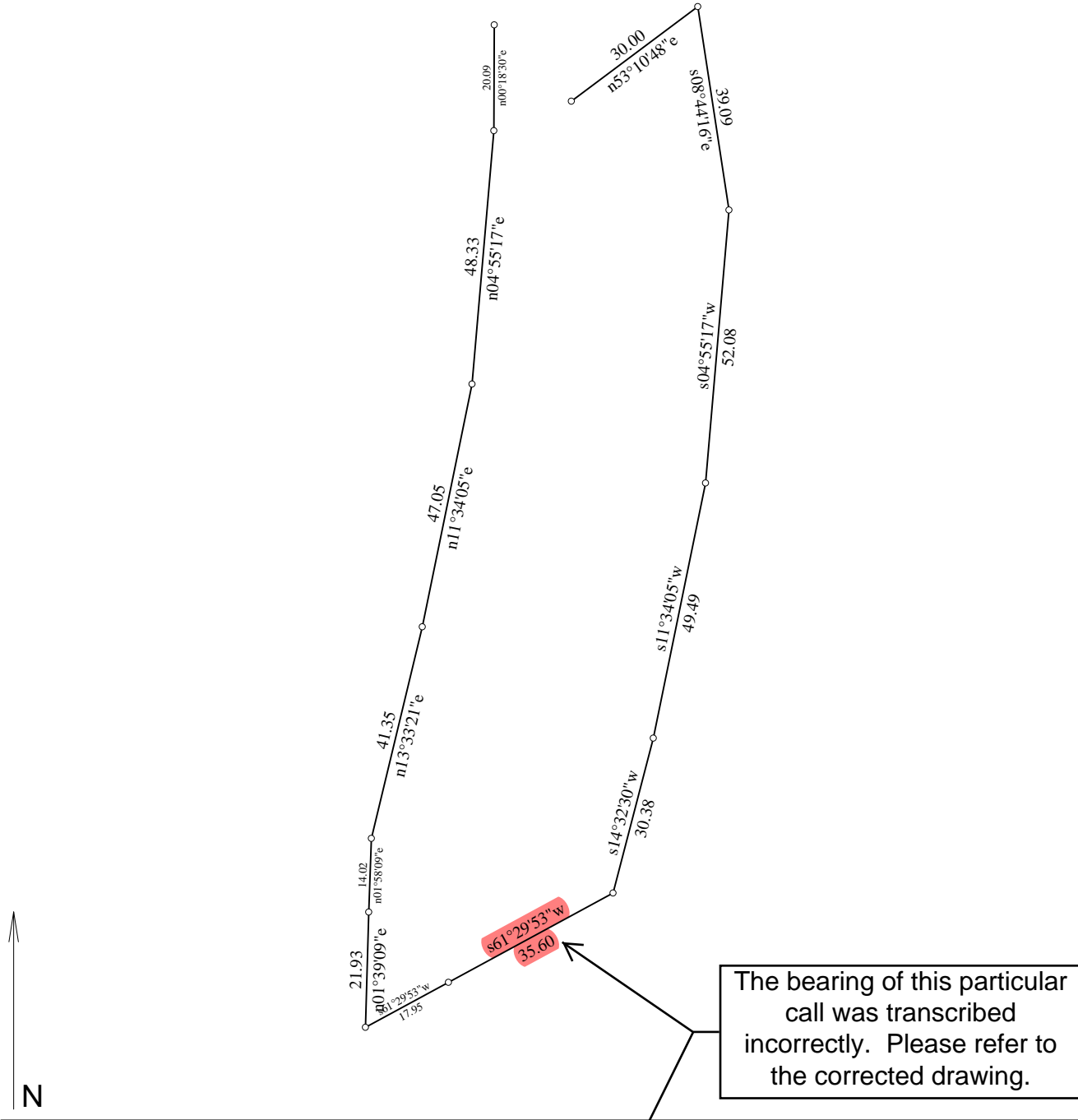


Property conveyed by QCD @ 37780-157

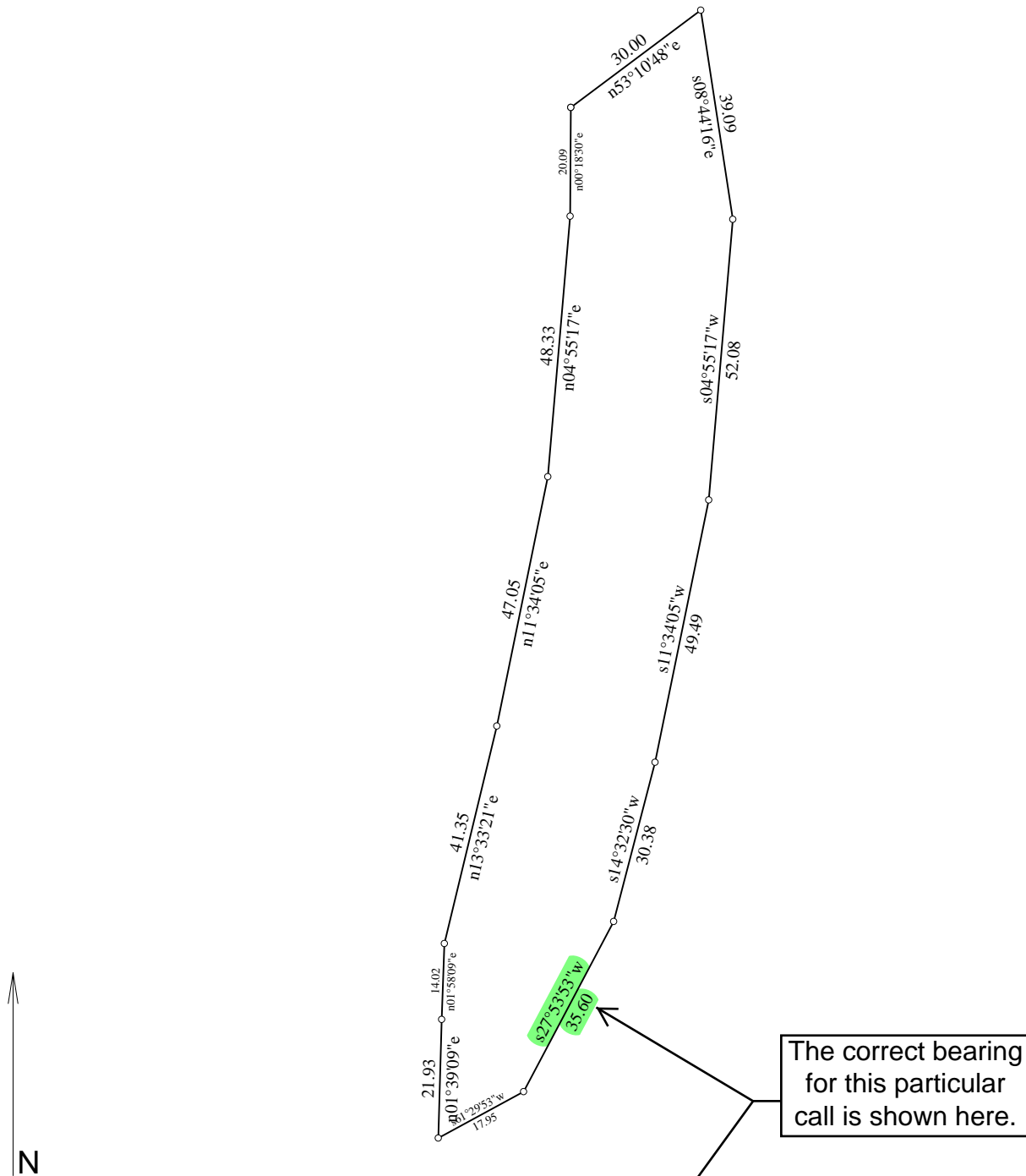


Scale: 1 inch = 30 feet

Tract 1: 0.156 Acres: 6803 Sq Feet: Closure = s45.1812e 20.58 Feet: Precision = 1/22: Perimeter = 447 Feet

001=n53.1048e 30.00	006=s61.2953w 35.60	011=n11.3405e 47.05
002=s08.4416e 39.09	007=s61.2953w 17.95	012=n04.5517e 48.33
003=s04.5517w 52.08	008=n01.3909e 21.93	013=n00.1830e 20.09
004=s11.3405w 49.49	009=n01.5809e 14.02	
005=s14.3230w 30.38	010=n13.3321e 41.35	

Corrected description from original survey.

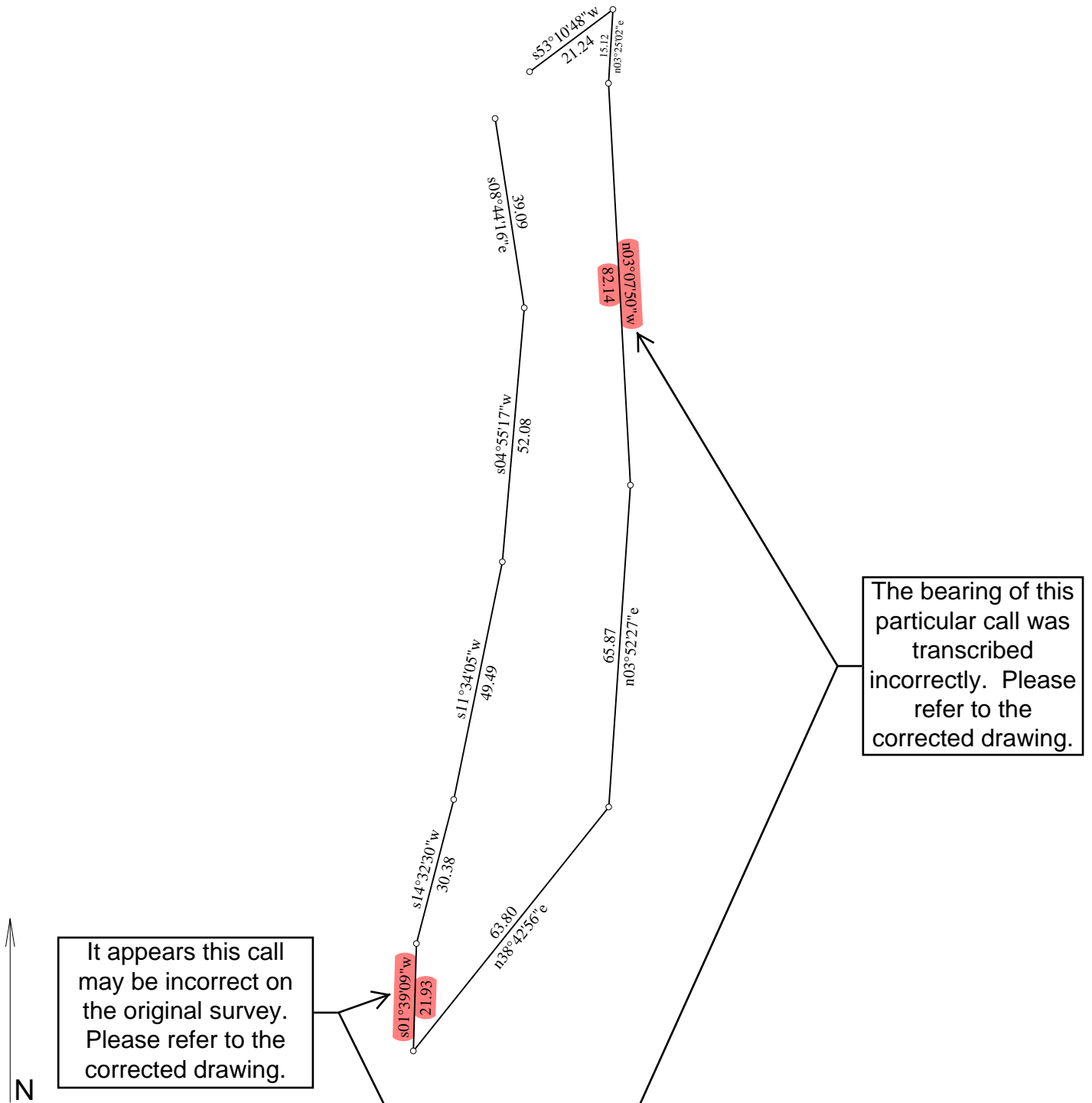


Scale: 1 inch = 30 feet

Tract 1: 0.128 Acres: 5577 Sq Feet: Closure = s55.1621e 0.00 Feet: Precision = 1/159444: Perimeter = 447 Feet

001=n53.1048e 30.00	006=s27.5353w 35.60	011=n11.3405e 47.05
002=s08.4416e 39.09	007=s61.2953w 17.95	012=n04.5517e 48.33
003=s04.5517w 52.08	008=n01.3909e 21.93	013=n00.1830e 20.09
004=s11.3405w 49.49	009=n01.5809e 14.02	
005=s14.3230w 30.38	010=n13.3321e 41.35	

Property conveyed by QCD @ 45013-699



The bearing of this particular call was transcribed incorrectly. Please refer to the corrected drawing.

It appears this call may be incorrect on the original survey. Please refer to the corrected drawing.

Scale: 1 inch = 30 feet

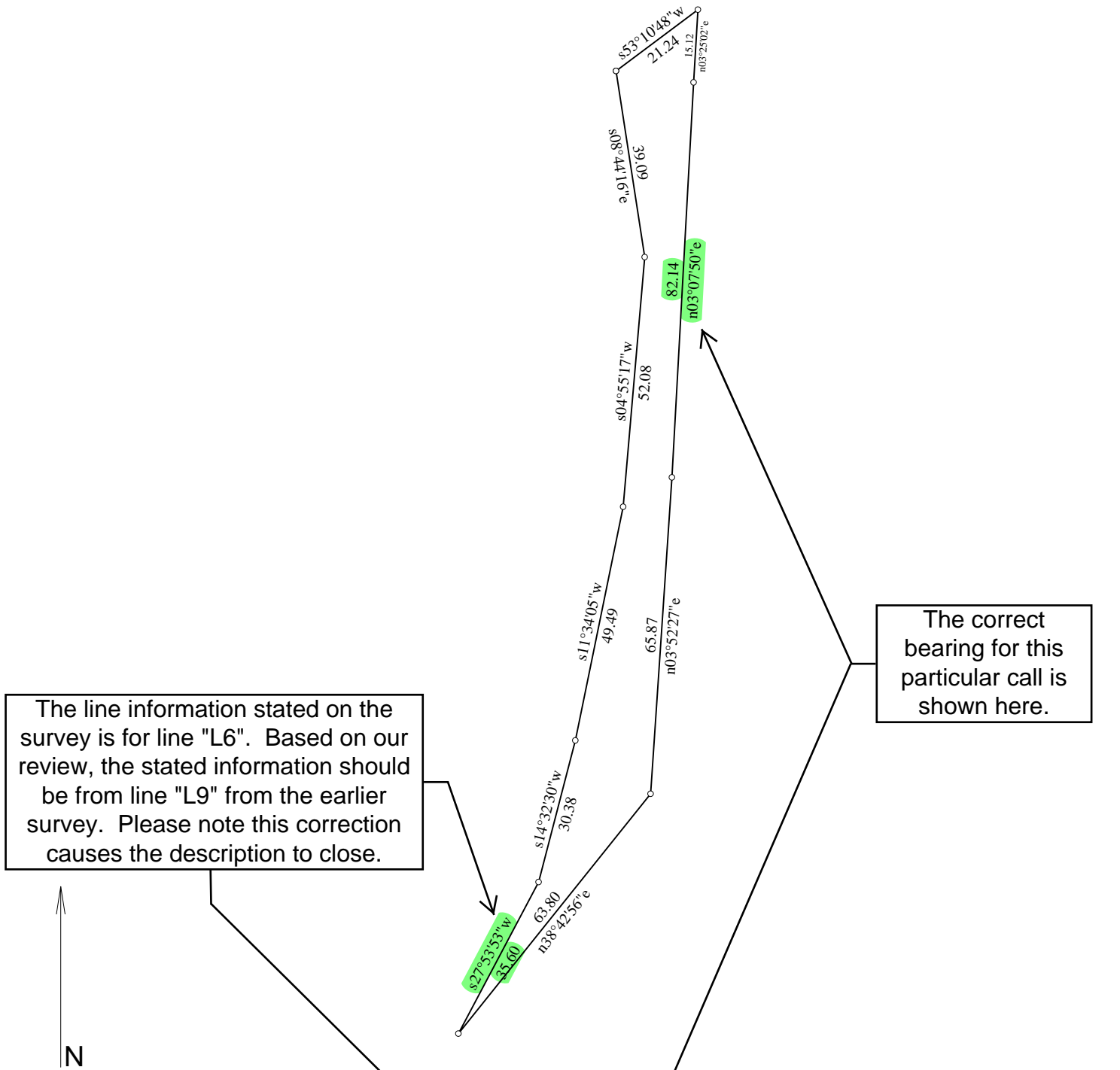
Tract 1: 0.090 Acres: 3922 Sq Feet: Closure = s36.2739w 11.87 Feet: Precision = 1/37: Perimeter = 441 Feet

001=s08.4416e 39.09
 002=s04.5517w 52.08
 003=s11.3405w 49.49
 004=s14.3230w 30.38

005=s01.3909w 21.93
 006=n38.4256e 63.80
 007=n03.5227e 65.87
 008=n03.0750w 82.14

009=n03.2502e 15.12
 010=s53.1048w 21.24

Corrected description using original survey and other evidence. See notes.



Scale: 1 inch = 30 feet

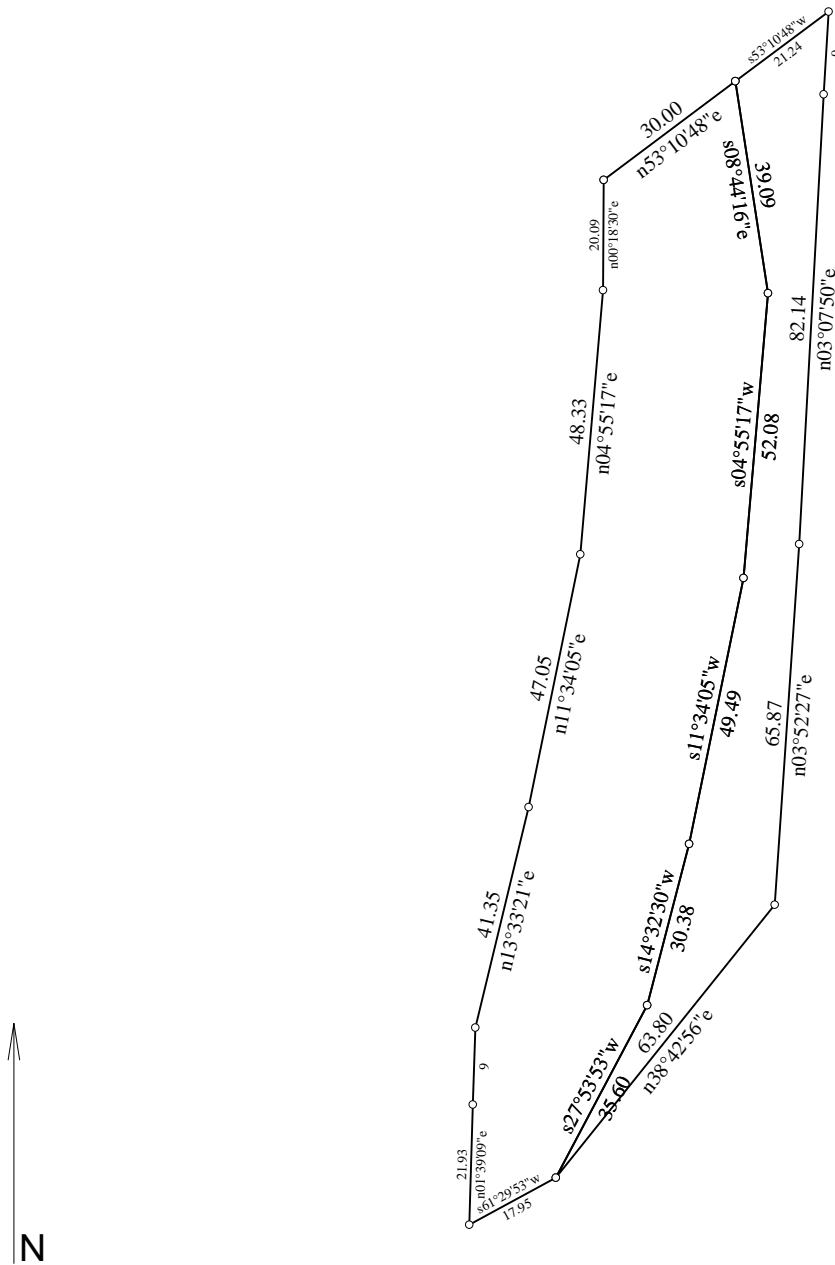
Tract 1: 0.052 Acres: 2250 Sq Feet: Closure = s12.0038e 0.00 Feet: Precision = 1/148291: Perimeter = 455 Feet

001=s08.4416e 39.09
 002=s04.5517w 52.08
 003=s11.3405w 49.49
 004=s14.3230w 30.38

005=s27.5353w 35.60
 006=n38.4256e 63.80
 007=n03.5227e 65.87
 008=n03.0750e 82.14

009=n03.2502e 15.12
 010=s53.1048w 21.24

Both acreage tracts corrected and merged.



Scale: 1 inch = 35 feet

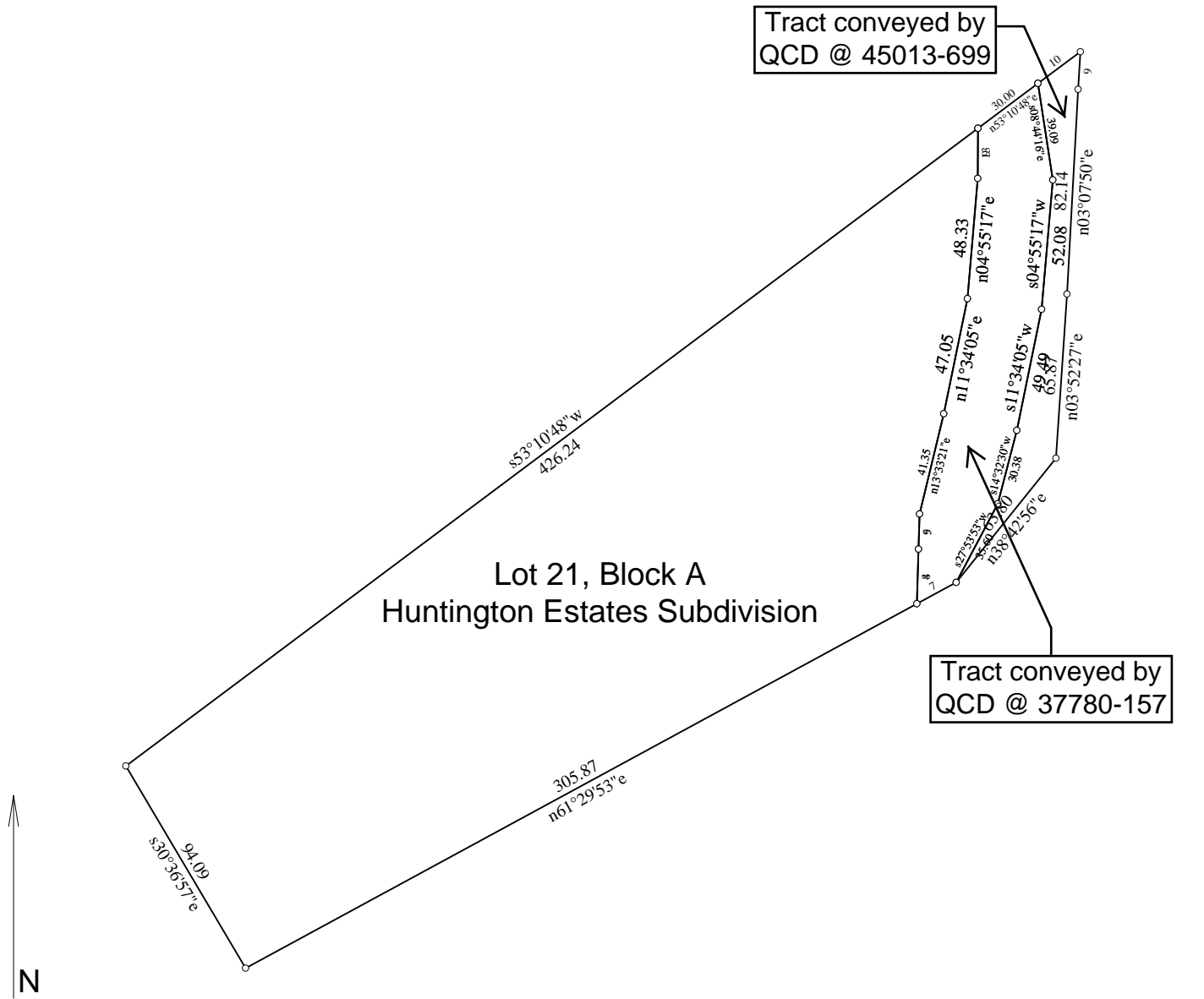
+Tract 1: 0.128 Acres: 5577 Sq Feet: Closure = s55.1621e 0.00 Feet: Precision = 1/159444: Perimeter = 447 Feet

+Tract 2: 0.052 Acres: 2250 Sq Feet: Closure = s12.0038e 0.00 Feet: Precision = 1/148291: Perimeter = 455 Feet

Net Area= 0.180 Acres: 7827 Sq Feet

001=n53.1048e 30.00	010=n13.3321e 41.35	019=s27.5353w 35.60
002=s08.4416e 39.09	011=n11.3405e 47.05	020=n38.4256e 63.80
003=s04.5517w 52.08	012=n04.5517e 48.33	021=n03.5227e 65.87
004=s11.3405w 49.49	013=n00.1830e 20.09	022=n03.0750e 82.14
005=s14.3230w 30.38	014=@ 2 +	023=n03.2502e 15.12
006=s27.5353w 35.60	015=s08.4416e 39.09	024=s53.1048w 21.24
007=s61.2953w 17.95	016=s04.5517w 52.08	
008=n01.3909e 21.93	017=s11.3405w 49.49	
009=n01.5809e 14.02	018=s14.3230w 30.38	

All three tracts which comprise subject property.



Scale: 1 inch = 65 feet

+Tract 1: 0.128 Acres: 5577 Sq Feet: Closure = s55.1621e 0.00 Feet: Precision =1/159444: Perimeter = 447 Feet
 +Tract 2: 0.052 Acres: 2250 Sq Feet: Closure = s12.0038e 0.00 Feet: Precision =1/148291: Perimeter = 455 Feet
 +Tract 3: 1.009 Acres: 43953 Sq Feet: Closure = s32.2904e 0.00 Feet: Precision =1/265306: Perimeter = 1019 Feet
 Net Area= 1.189 Acres: 51780 Sq Feet

001=n53.1048e 30.00	013=n00.1830e 20.09	025=@0 +
002=s08.4416e 39.09	014=@2 +	026=s53.1048w 426.24
003=s04.5517w 52.08	015=s08.4416e 39.09	027=s30.3657e 94.09 ?
004=s11.3405w 49.49	016=s04.5517w 52.08	028=n61.2953e 305.87
005=s14.3230w 30.38	017=s11.3405w 49.49	029=n01.3909e 21.93
006=s27.5353w 35.60	018=s14.3230w 30.38	030=n01.5809e 14.02
007=s61.2953w 17.95	019=s27.5353w 35.60	031=n13.3321e 41.35
008=n01.3909e 21.93	020=n38.4256e 63.80	032=n11.3405e 47.05
009=n01.5809e 14.02	021=n03.5227e 65.87	033=n04.5517e 48.33
010=n13.3321e 41.35	022=n03.0750e 82.14	034=n00.1830e 20.09
011=n11.3405e 47.05	023=n03.2502e 15.12	
012=n04.5517e 48.33	024=s53.1048w 21.24	