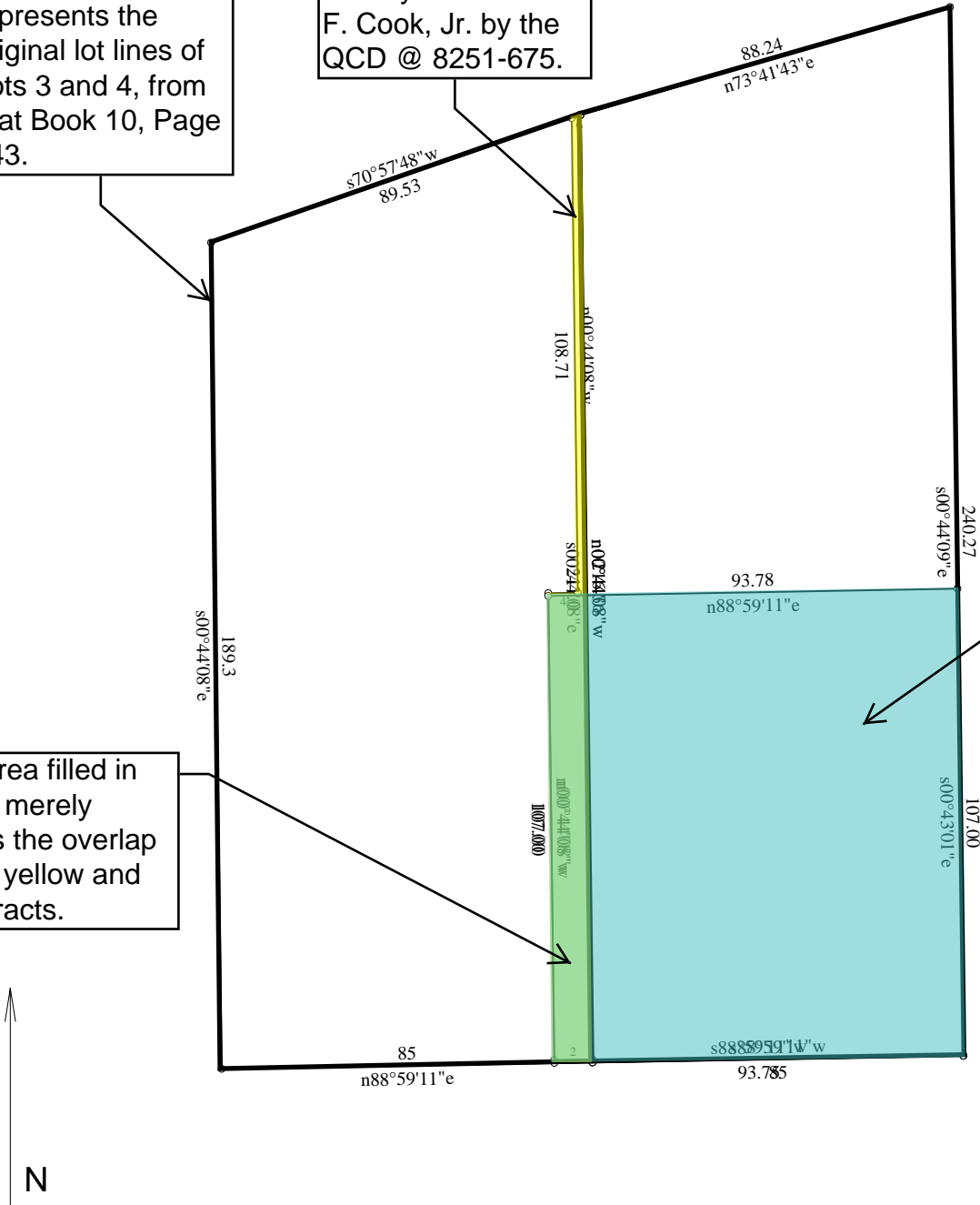


The black outline represents the original lot lines of Lots 3 and 4, from Plat Book 10, Page 143.

The property filled in yellow represents the portion of Lot 3 conveyed to James F. Cook, Jr. by the QCD @ 8251-675.

The area filled in green merely shows the overlap of the yellow and blue tracts.

The property filled in blue represents the current configuration of the subject property. This is the tract that is excepted from the "sell-off" by the WD @ 8719-73. As can be seen, it includes portions of both original Lots 3 and 4.



Scale: 1 inch = 40 feet

Nqv6: 0.446 Acres: 19434 Sq Feet: Closure = s73.2700w 0.00 Feet: Precision =1/138243: Perimeter = 631 Feet  
 Nqv5: 0.396 Acres: 17268 Sq Feet: Closure = n69.4709e 0.00 Feet: Precision =1/217402: Perimeter = 581 Feet  
 RctvqhNqv5: 0.027 Acres: 1155 Sq Feet: Closure = n85.1748w 0.00 Feet: Precision =1/102244: Perimeter = 450 Feet  
 UwdlgevRtqr gtv: 0.230 Acres: 10033 Sq Feet: Closure = s88.5452e 0.00 Feet: Precision =1/84372: Perimeter = 402 Feet

- |                       |                      |                      |
|-----------------------|----------------------|----------------------|
| 001=s88.5911w 85      | 009=s00.4408e 189.3  | 017=n71.0325e 2.11   |
| 002=n00.4408w 217.0   | 010=n88.5911e 85     | 018=@0               |
| 003=n73.4143e 88.24 ? | 011=@3               | 019=s88.5911w 93.75  |
| 004=s00.4409e 240.27  | 012=s00.4408e 216.36 | 020=n00.4408w 107.00 |
| 005=@0                | 013=s88.5911w 8.75   | 021=n88.5911e 93.78  |
| 006=s88.5911w 85      | 014=n00.4408w 107.00 | 022=s00.4301e 107.00 |
| 007=n00.4408w 217.0   | 015=n88.5911e 6.75   |                      |
| 008=s70.5748w 89.53 ? | 016=n00.4408w 108.71 |                      |