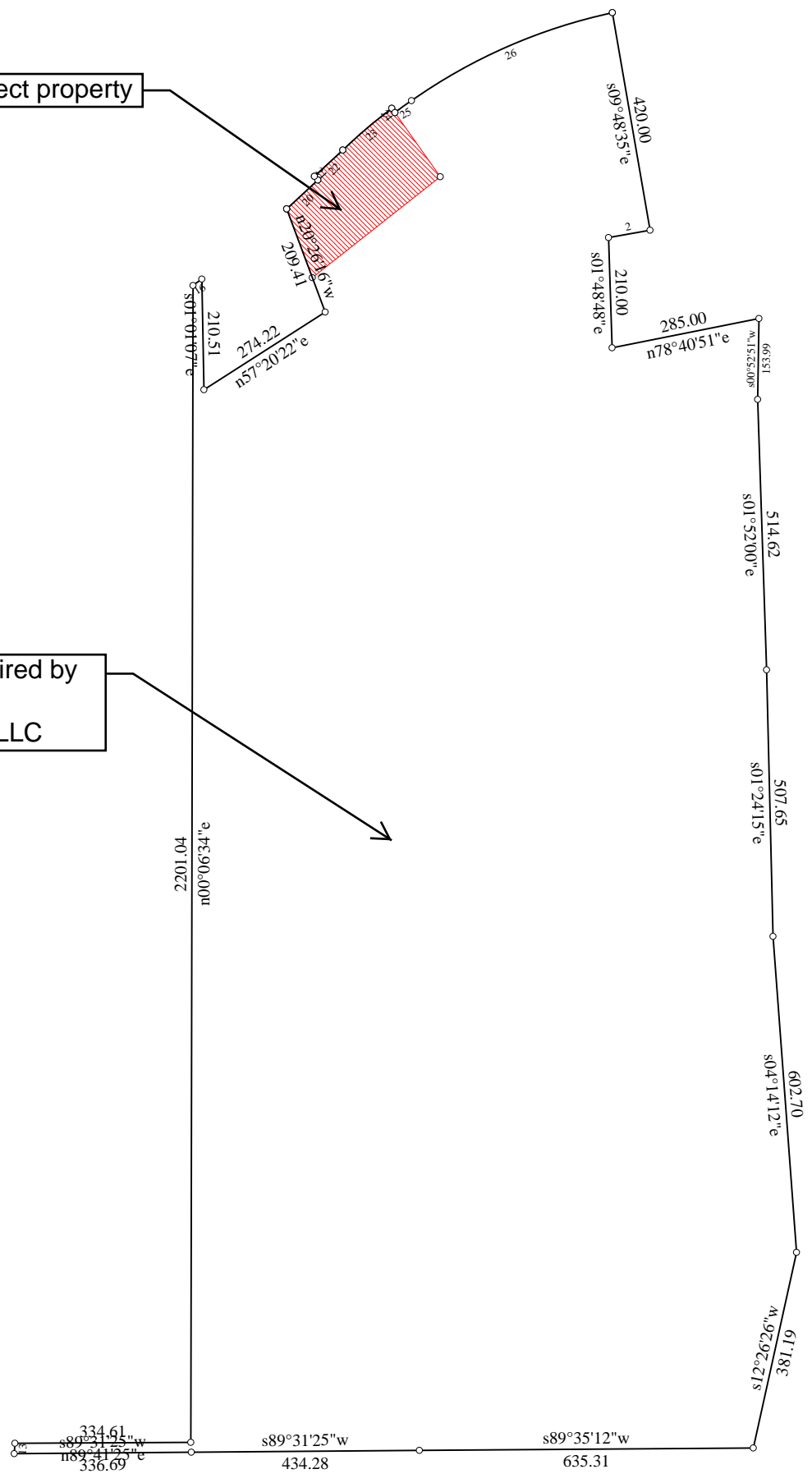




Subject property

Tract acquired by Riverridge Ventures, LLC



Scale: 1 inch = 520 feet

## Data and Deed Call Listing of File: 9607 Highway 166.des

---

+Tract 1: 60.673 Acres: 2642896 Sq Feet: Closure = n59.5032w 0.01 Feet: Precision =1/661018: Perimeter = 8588 Feet

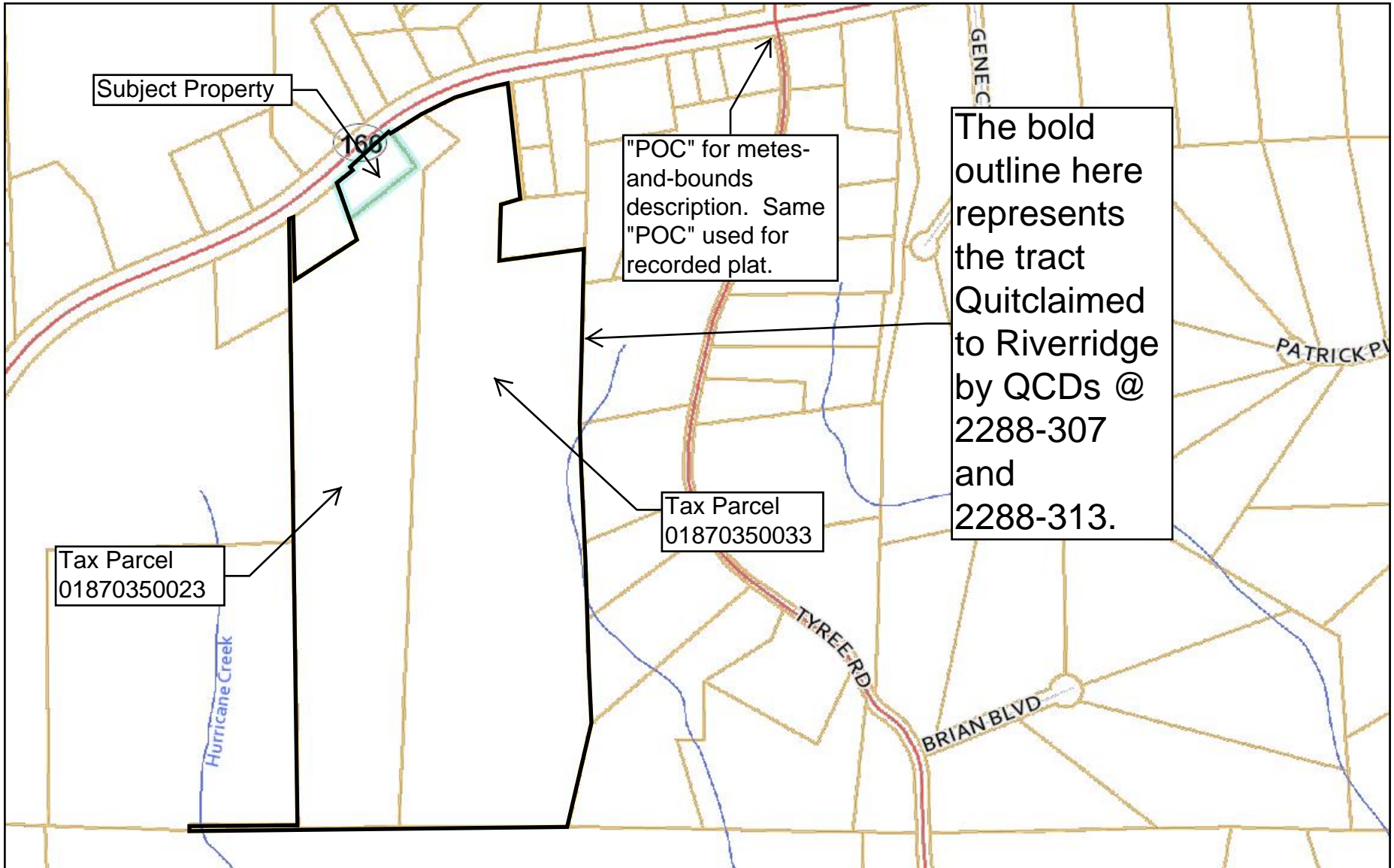
-Tract 2: 1.000 Acres: 43560 Sq Feet: Closure = n19.4105e 0.01 Feet: Precision =1/96520: Perimeter = 896 Feet

Net Area= 59.673 Acres: 2599335 Sq Feet

---

001=s09.4835e 420.00  
002=s79.4928w 79.99  
003=s01.4848e 210.00  
004=n78.4051e 285.00  
005=s00.5251w 153.99  
006=s01.5200e 514.62  
007=s01.2415e 507.65  
008=s04.1412e 602.70  
009=s12.2626w 381.19  
010=s89.3512w 635.31  
011=s89.3125w 434.28  
012=s89.3125w 336.69  
013=n03.1753e 19.95  
014=n89.4125e 334.61  
015=n00.0634e 2201.04  
016: Lt, R=1669.41, Arc=20.89  
Bng=n54.1932e, Chd=20.89  
017=s01.0107e 210.51  
018=n57.2022e 274.22  
019=n20.2616w 209.41  
020=n47.2156e 80.71  
021=n42.3204w 10.00  
022=n47.2148e 73.60  
023: Rt, R=1069.77, Arc=122.43  
Bng=n49.3732e, Chd=122.37  
024=s37.0544e 10.00  
025: Rt, R=1059.77, Arc=38.82  
Bng=n53.5714e, Chd=38.82  
026: Rt, R=1059.77, Arc=420.04  
Bng=n66.2129e, Chd=417.29  
027=@20 -  
028=n47.2156e 80.71  
029=n42.3804w 10.00  
030=n47.2148e 73.60  
031: Rt, R=1069.77, Arc=122.43  
Bng=n49.3732e, Chd=122.37  
032=s37.0544e 10.00  
033=s35.1153e 149.45  
034=s51.4258w 309.99  
035=n20.2616w 139.81

Douglas County, GA Map



*\*Douglas County makes no warranties with respect to the accuracy and completeness of this information*

Map Scale  
1 inch = 531 feet

1/15/2010