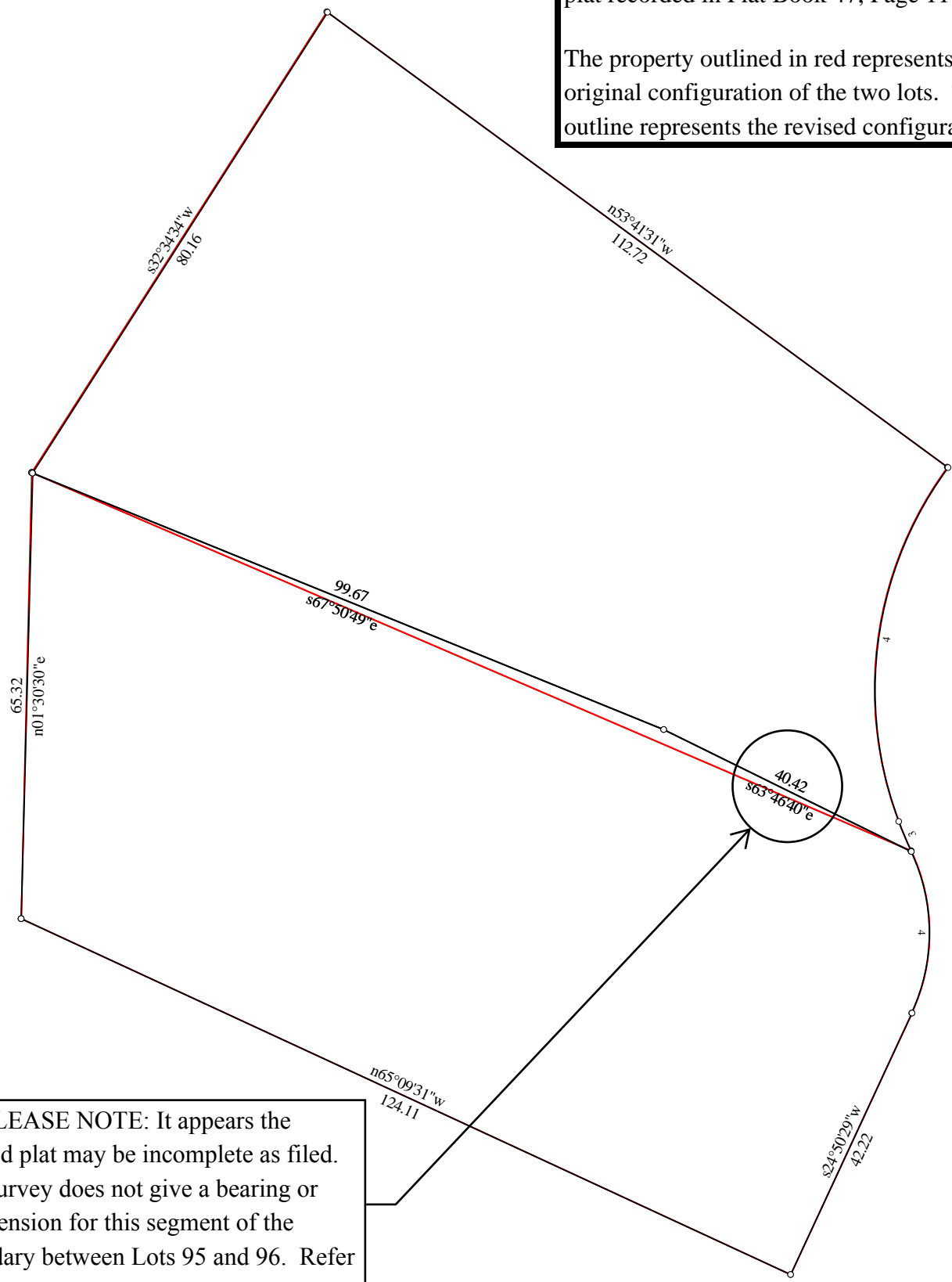




This depiction illustrates the revisions to the line between Lots 95 and 96 as per the revised plat recorded in Plat Book 47, Page 117.

The property outlined in red represents the original configuration of the two lots. The black outline represents the revised configuration.



\*\*\*PLEASE NOTE: It appears the revised plat may be incomplete as filed. The survey does not give a bearing or a dimension for this segment of the boundary between Lots 95 and 96. Refer to title notes.

Title:	Date: 09-10-2009
File: Revisions to Lots 95 and 96, Steele Forest Subdivision - Henry County.des	

## Data and Deed Call Listing of File: Revisions to Lots 95 and 96, Steele Forest Subdivision - Henry County.d

Tract 1: 0.194 Acres: 8464 Sq Feet: Closure = n24.1430e 0.01 Feet: Precision =1/53925: Perimeter = 396 Feet  
Tract 2: 0.183 Acres: 7975 Sq Feet: Closure = s01.2333w 0.00 Feet: Precision =1/96253: Perimeter = 392 Feet  
Tract 3: 0.197 Acres: 8593 Sq Feet: Closure = n65.5427w 0.00 Feet: Precision =1/276888: Perimeter = 396 Feet  
Tract 4: 0.180 Acres: 7833 Sq Feet: Closure = s69.2547e 0.06 Feet: Precision =1/6874: Perimeter = 392 Feet

---

001=n01.2219e 65.41

002=s66.4152e 140.09

003: Rt, R=28.00, Arc=24.59

Bng=s00.1859e, Chd=23.81

004=s24.5029w 42.22

005=n65.0931w 124.11

006=@2

007=s66.4152e 140.09

008: Rt, R=55.00, Arc=59.31

Bng=n05.2501e, Chd=56.48

009=n53.4131w 112.72

010=s32.3434w 80.16

011=@0

012=n01.3030e 65.32

013=s67.5049e 99.67

014=s63.4640e 40.42 ? - This call is not provided by the survey, it had to be generated by the mapping program.

015: Rt, R=28.00, Arc=24.45

Bng=s00.1035e, Chd=23.68

016=s24.5029w 42.22

017=n65.0931w 124.11

018=@13

019=s67.5049e 99.67

020=s63.4640e 40.42 ? - This call is not provided by the survey, it had to be generated by the mapping program.

021: Rt, R=55.00, Arc=4.76

Bng=n22.4250w, Chd=4.76

022: Rt, R=55.00, Arc=54.59

Bng=n07.5428e, Chd=52.37

023=n53.4131w 112.72

024=s32.3434w 80.16